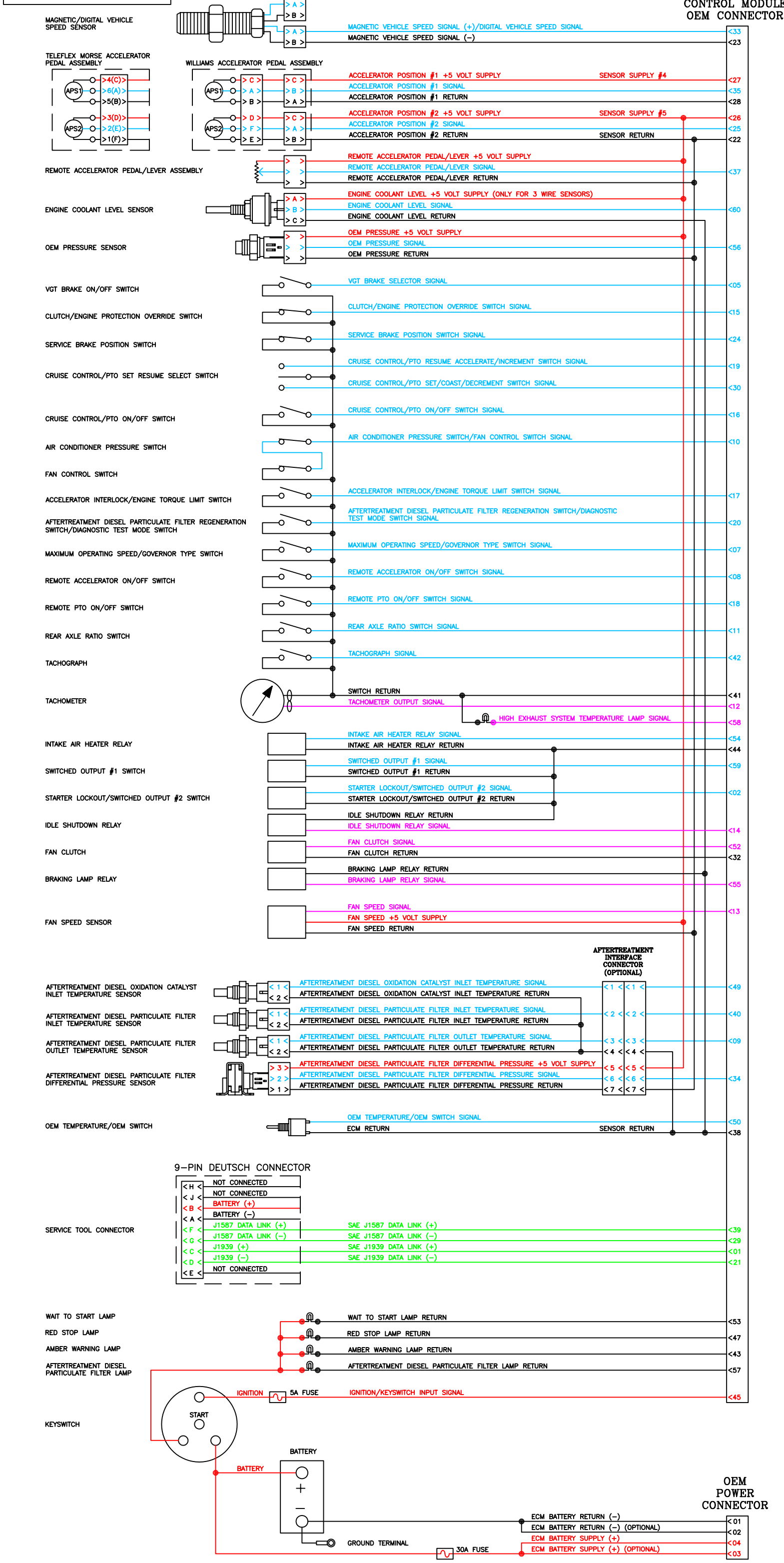


RED: DC VOLTAGE
BLUE: INPUT SIGNALS
BLACK: GROUNDS, SHIELDS AND RETURNS
PURPLE: OUTPUT SIGNALS
GREEN: DATA LINKS

—○— REPRESENTS FEMALE PIN
 —●— REPRESENTS MALE PIN
 —○— REPRESENTS TWISTED PAIR
 —○— REPRESENTS SHIELD

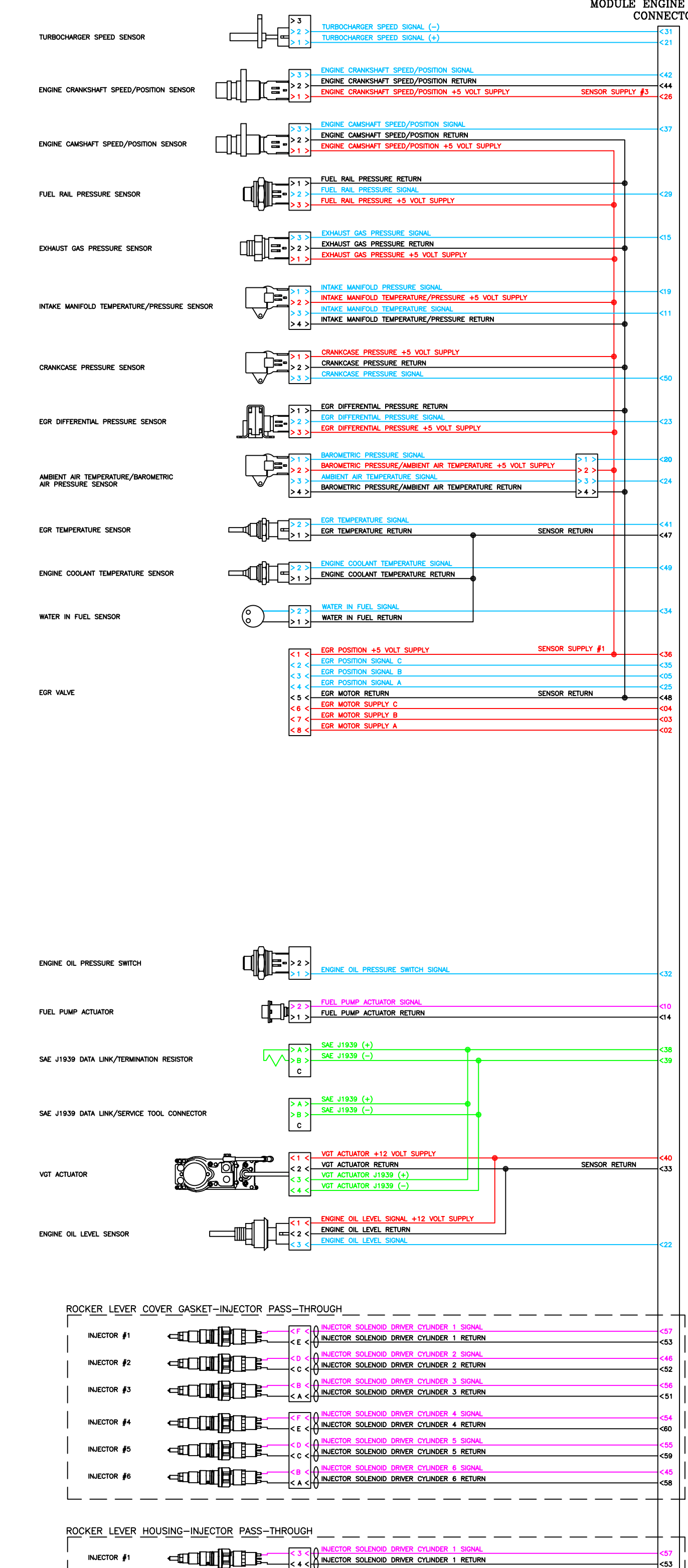
NOTE 1: SOME OF THE CIRCUITS SHOWN HERE WILL NOT BE ACTIVE IN ALL APPLICATIONS. CONSULT THE EQUIPMENT MANUFACTURER'S LITERATURE TO DETERMINE WHICH CIRCUITS ARE USED.

NOTE 2: MAY BE EITHER INCREMENT OR DECREMENT DEPENDING ON THE VALUE OF THE ECM ADJUSTABLE PARAMETER "CRUISE CONTROL SETUP".

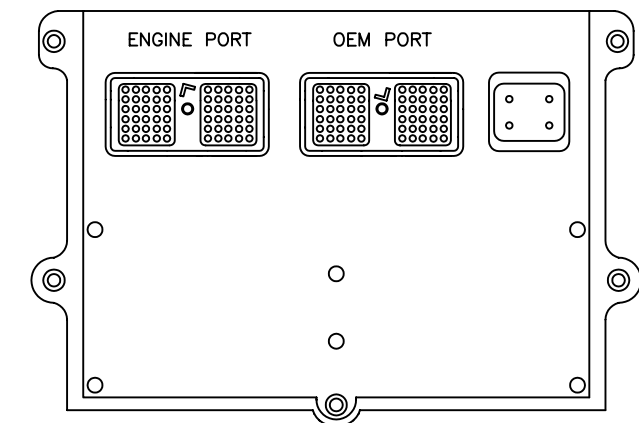


OEM RESPONSIBILITY

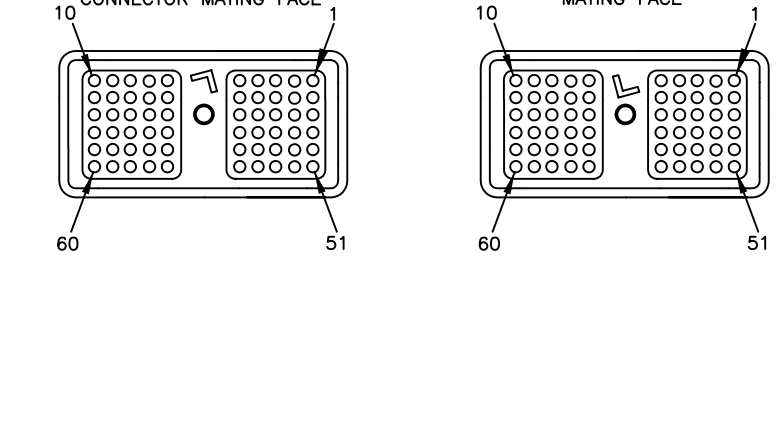
CUMMINS RESPONSIBILITY



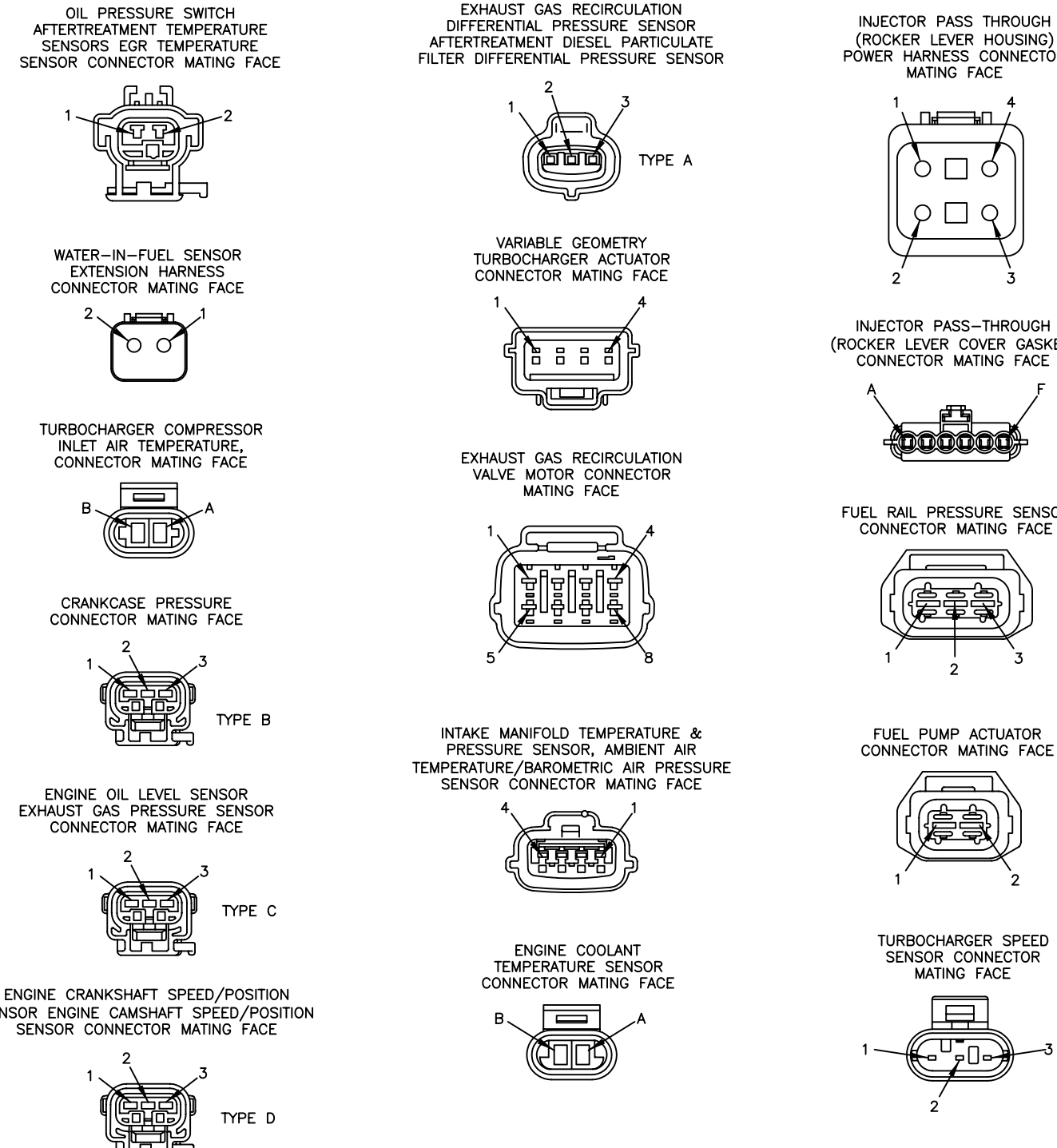
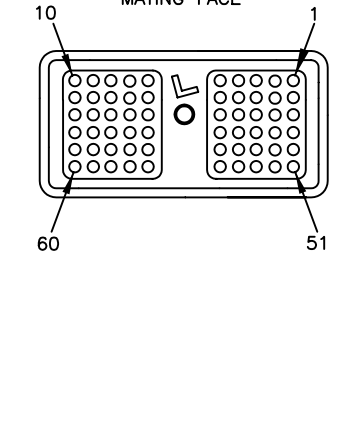
ELECTRONIC CONTROL MODULE (ECM)



ELECTRONIC CONTROL MODULE (ECM) ENGINE HARNESS CONNECTOR MATING FACE



ELECTRONIC CONTROL MODULE (ECM) OEM HARNESS CONNECTOR MATING FACE



CUMMINS CONFIDENTIAL
 DRAFT COPY

PROOF COPY
 Bulletin 4021572-03
 6/25/2010

OEM RESPONSIBILITY

CUMMINS RESPONSIBILITY